

# Carbon Trading with Landfill Gas (LFG) and carbon credits; JI and CDM – projects

Trade with greenhouse gas emissions resp. greenhouse gas allowance

10th International Waste Management and Landfill Symposium / Sardinia 2005

3 – 7 October 2005

**Learn CO<sub>2</sub>e – Trading ...  
... and get into the pole position.**

Background photo:

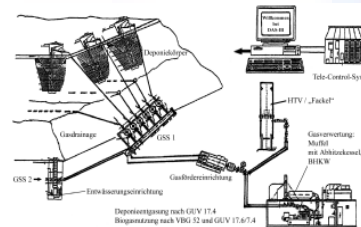
„The day after tomorrow“

DAS – IB GmbH

LFG - & Biogas - Technology

Biogas-, Sludge gas and Landfill gas technology:

- Consulting, planning & design, project management
- Familiarisation and training of system operators
- Independent Expert & Specialist
- Expert in ATEX – Zoning according to 99/92/EG and 94/9/EG



Flintbeker Str. 55  
D 24113 Kiel  
Tel. und Fax # 49 / 431 /  
683814  
[www.das-ib.de](http://www.das-ib.de)  
Email: info@das-ib.de

2.X.2005

Story of making .....

Money from LFG (Methane) / waste

**BUT** ....

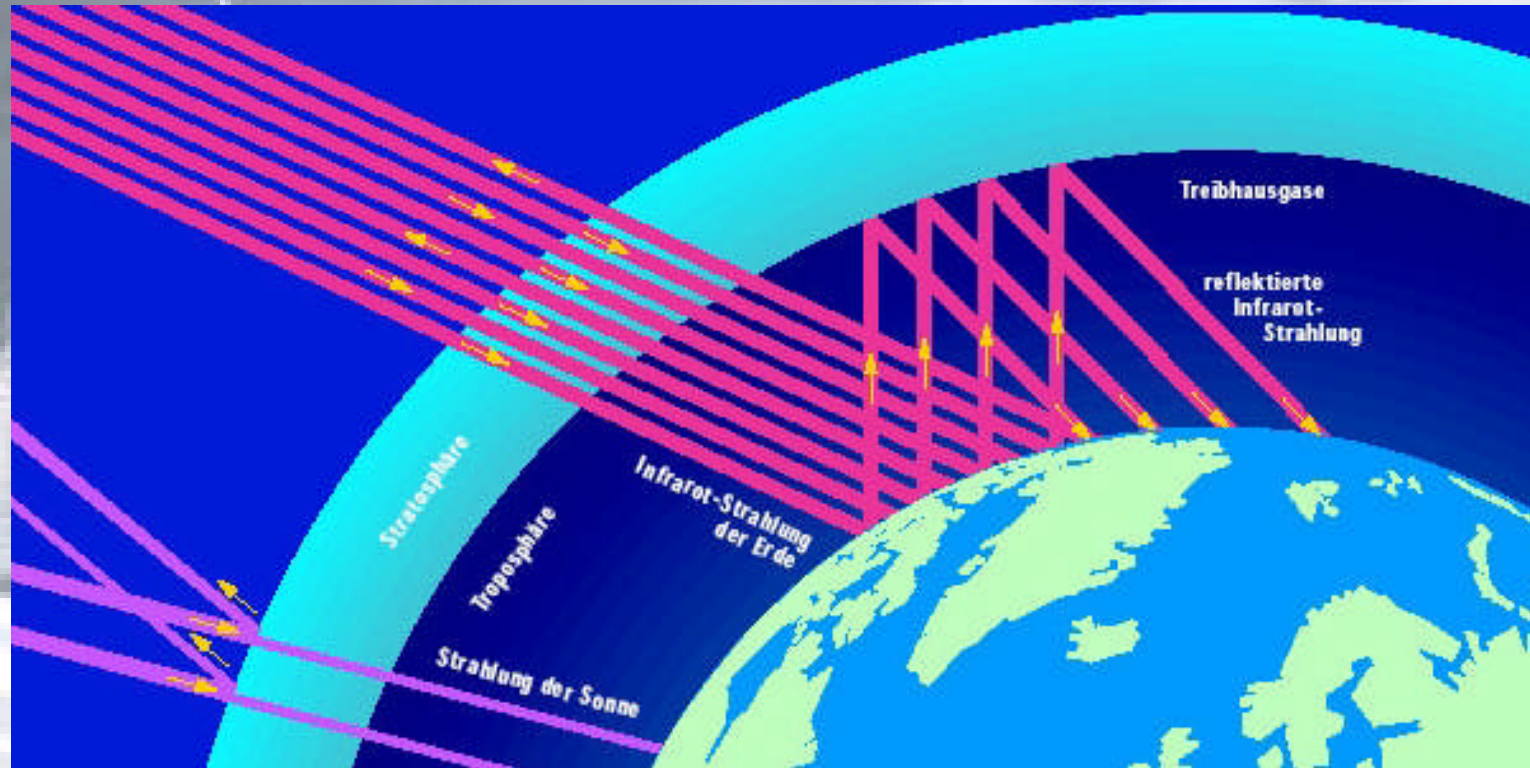
DAS – IB GmbH, LFG & Biogas - Technology  
[www.das-ib.de](http://www.das-ib.de) , phone & fax #49 / 431 / 683814



## Green house effect

FACTS and Background ...  
to whom it's concern ..

DAS – IB GmbH, LFG & Biogas - Technology  
[www.das-ib.de](http://www.das-ib.de) , phone & fax #49 / 431 / 683814



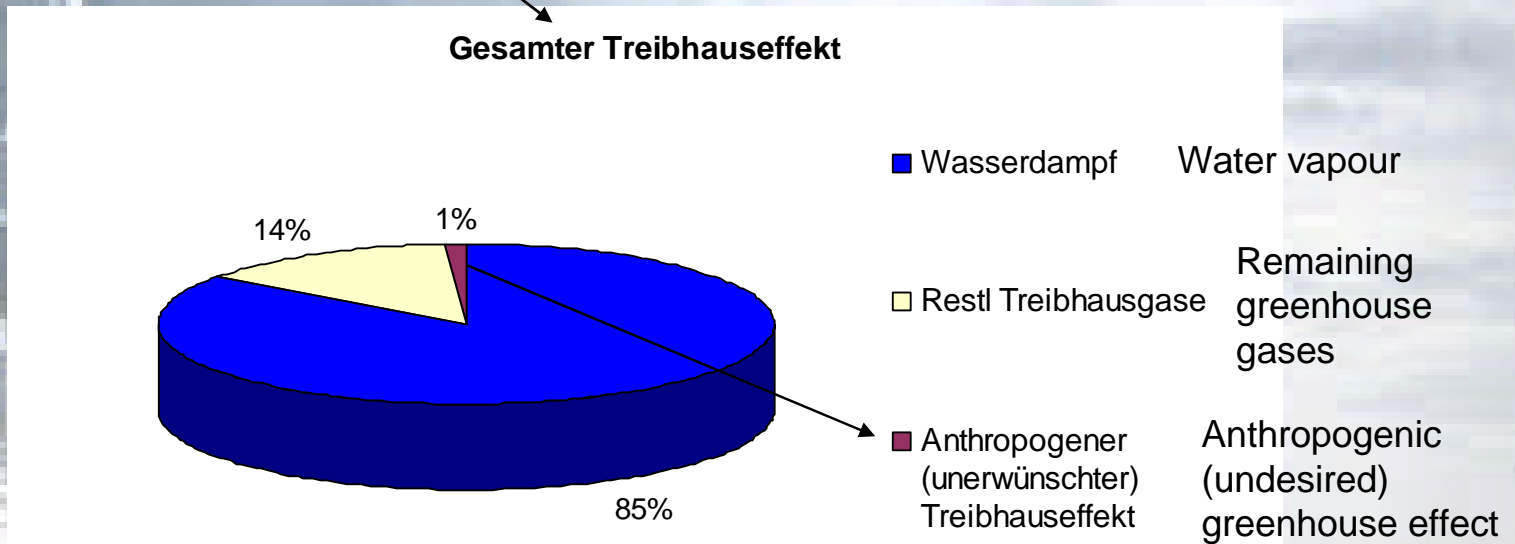
Natural greenhouse effect (Troposphere solar energy) approx. 1,35 kW / m<sup>2</sup>

In the absence of this effect we have approx. 15°C instead of approx. - 18°C

And most life on earth is capable of existence

Total Greenhouse effect  
FACTS and Background ...  
to whom it's concern ..

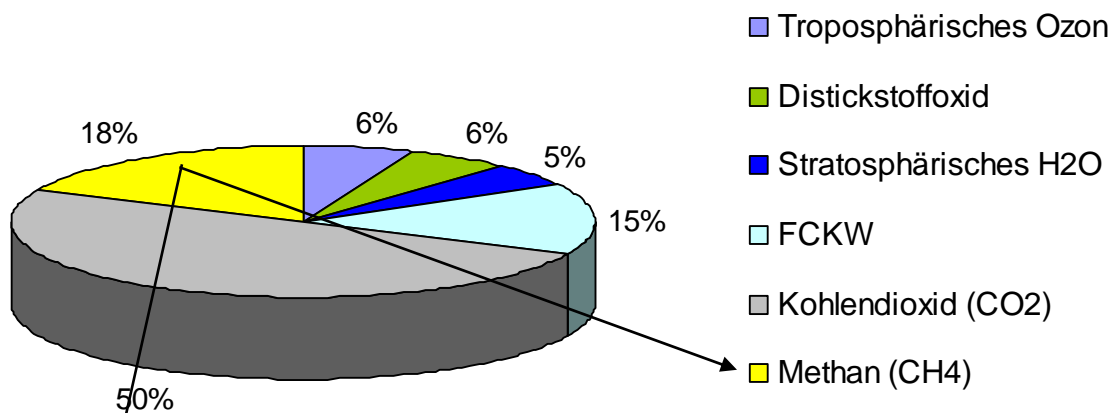
DAS – IB GmbH, LFG & Biogas - Technology  
[www.das-ib.de](http://www.das-ib.de) , phone & fax #49 / 431 / 683814



Water vapour: 60 – 95 %, Remaining greenhouse gases: 5 – 40 %  
**Anthropogenic (undesired) greenhouse effect: 0.5 – 1.5 %**

Anthropogenic (undesired)  
greenhouse effect

Anthropogener Treibhauseffekt



Tropospheric ozone  
N2O: Nitrous oxide  
Stratospheric H2O  
CFC

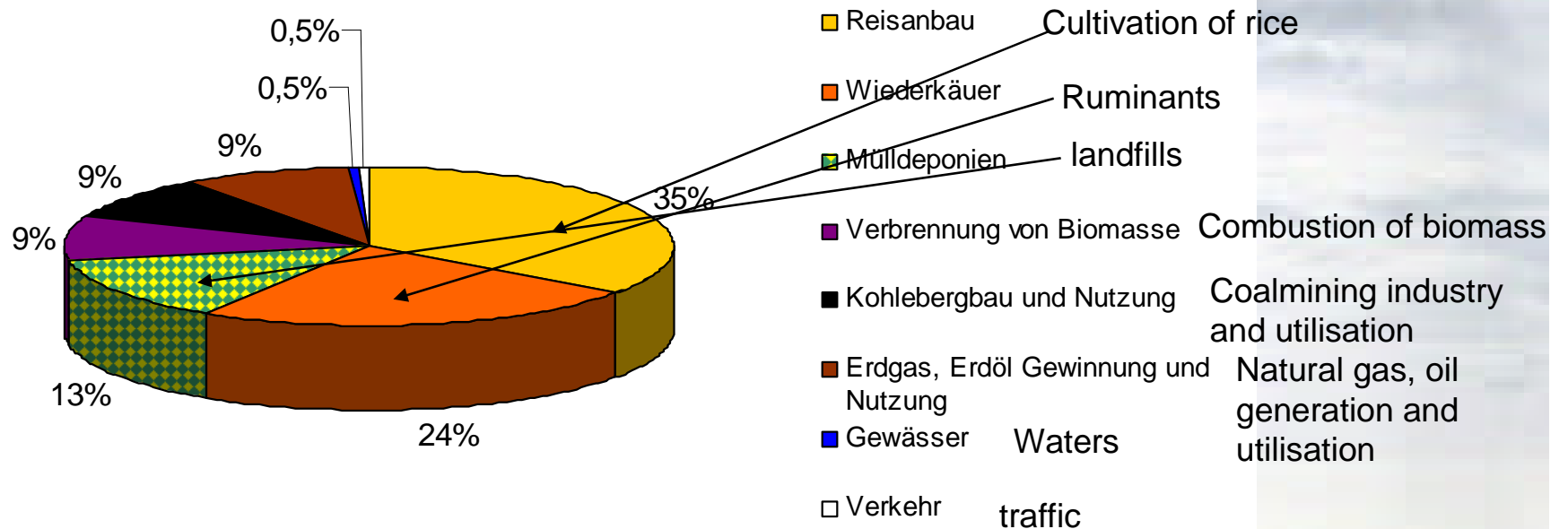
Tropospheric ozone: 2 - 10 %, N2O: Nitrous oxide: 2 – 10 %,  
Stratospheric H2O: 0 – 10 %, CFC: 5 – 25 %, CO2: 35 – 65 %

**Methane: 10 – 25 %**

**Anthropogenic (undesired)  
greenhouse effect of  
methane emissions**

**DAS – IB GmbH, LFG & Biogas - Technology**  
[www.das-ib.de](http://www.das-ib.de) , phone & fax #49 / 431 / 683814

**Zusammensetzung der anthropogenen Methanemissionen (D :  
380 Mt/a)**

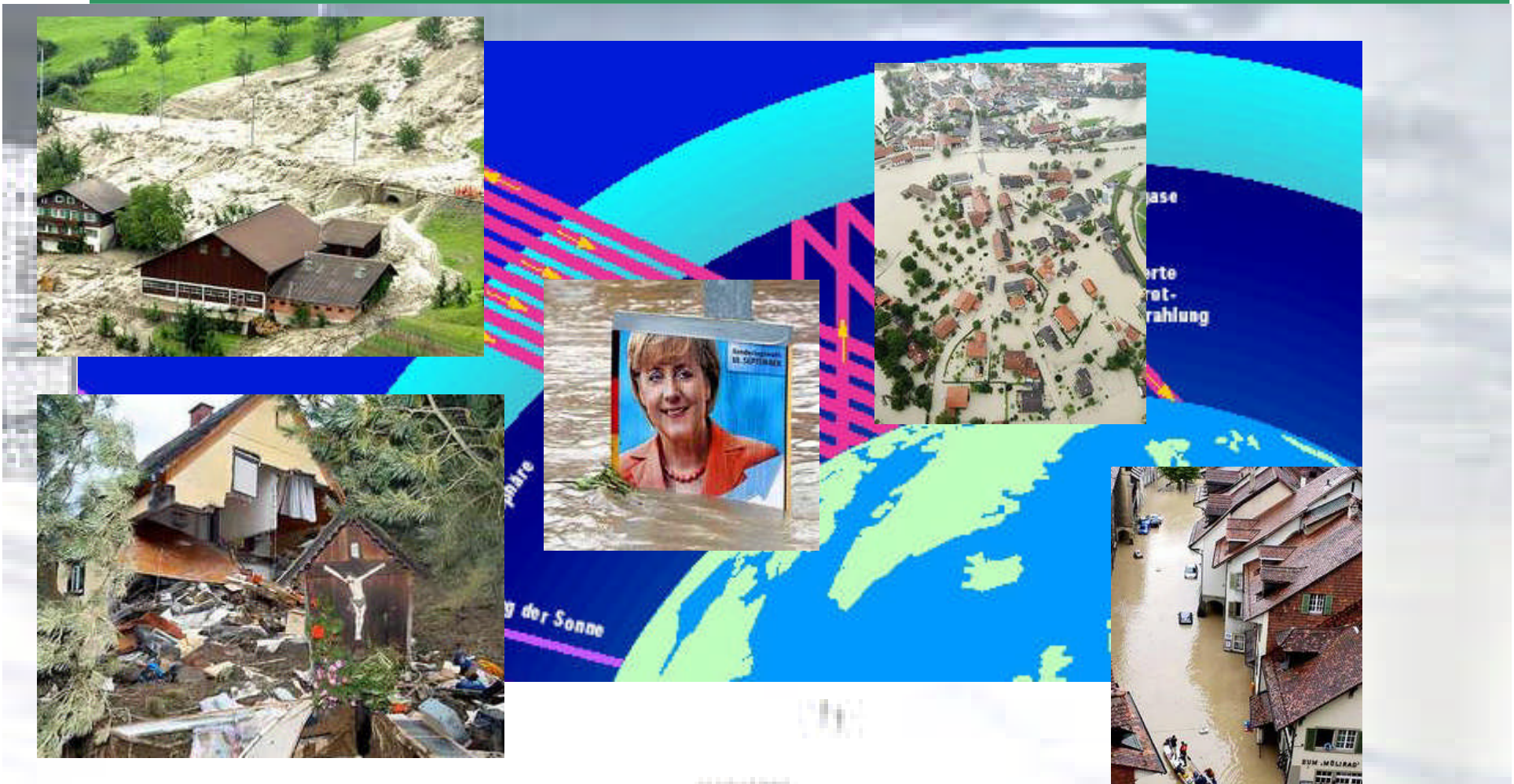


Cultivation of rice: 35 %, Ruminants: 24 %,  
**landfills: 13 %**

“Wind of change” ?

Flood in Switzerland, Austria,  
Germany: August 2005

DAS – IB GmbH, LFG & Biogas - Technology  
[www.das-ib.de](http://www.das-ib.de) , phone & fax #49 / 431 / 683814

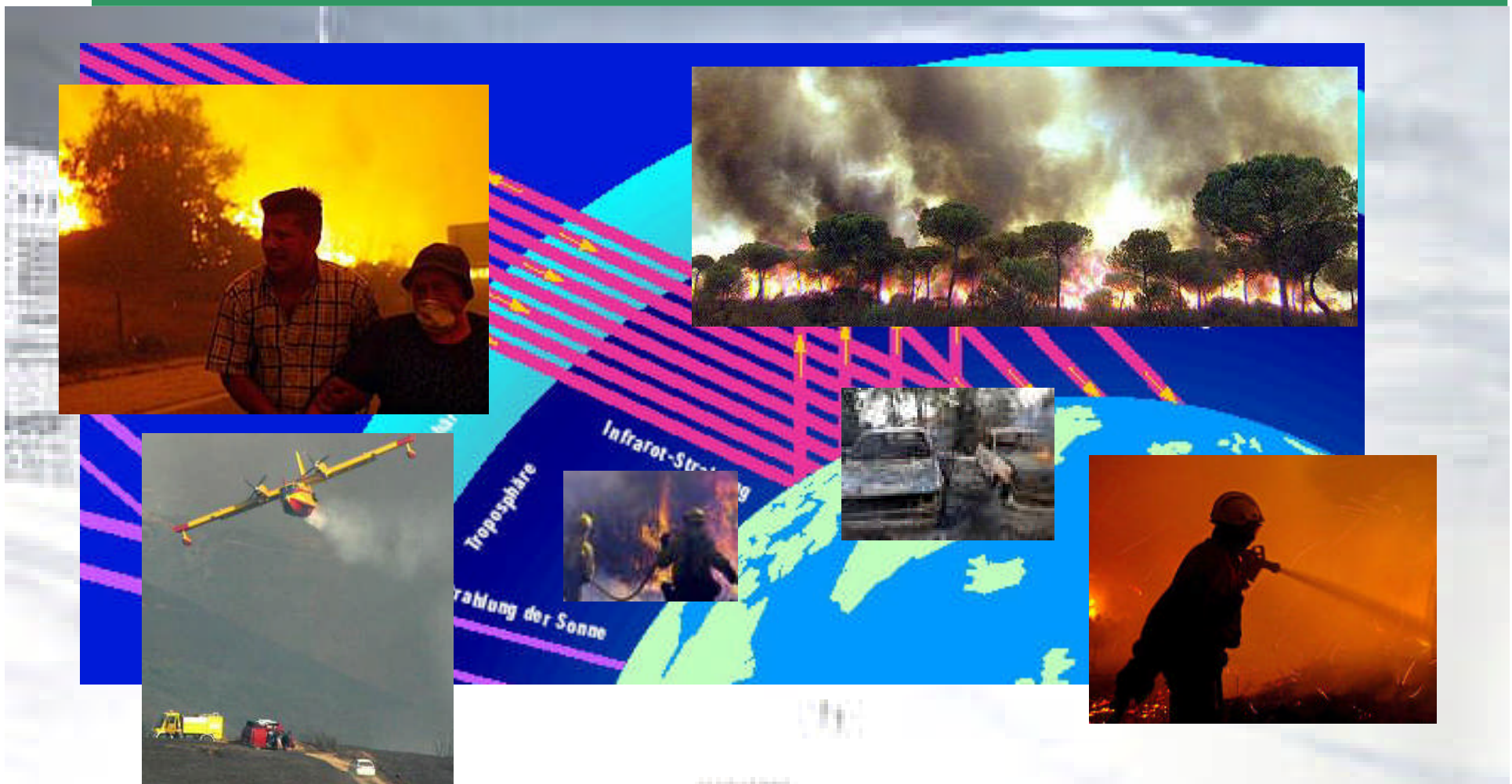


Stachowitz, Sept. 05

“Wind of change” ?

Dryness & Fire in Portugal: August 2005

DAS – IB GmbH, LFG & Biogas - Technology  
[www.das-ib.de](http://www.das-ib.de) , phone & fax #49 / 431 / 683814



Stachowitz, Sept. 05



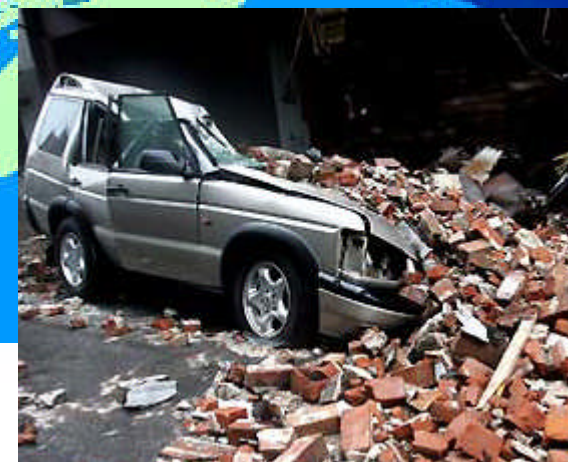
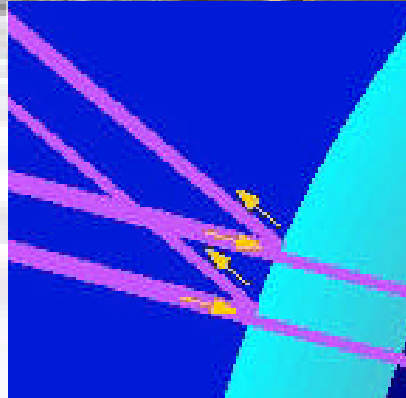
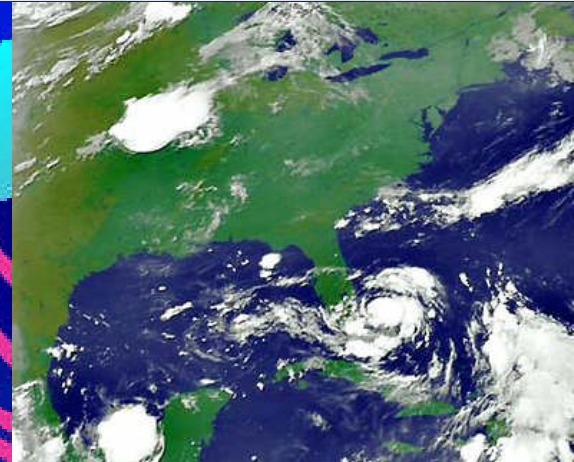
“Wind of change” ?

Louisiana / USA: August / September  
2005 – Tropical Storm Katrina and Rita

DAS – IB GmbH, LFG & Biogas - Technology  
[www.das-ib.de](http://www.das-ib.de) , phone & fax #49 / 431 / 683814



The big ONE



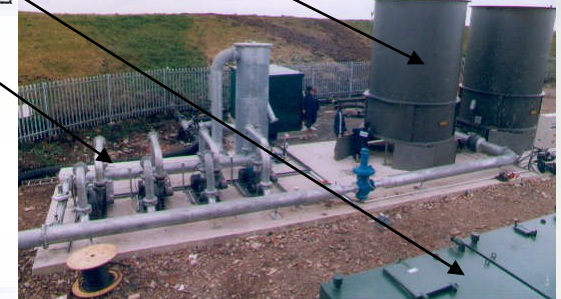
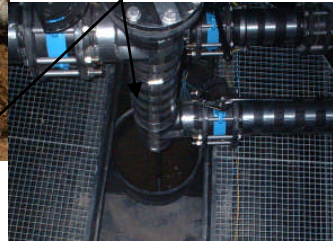
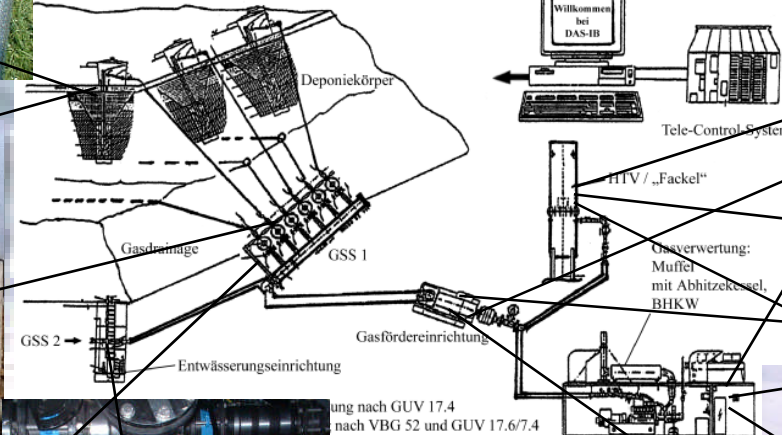
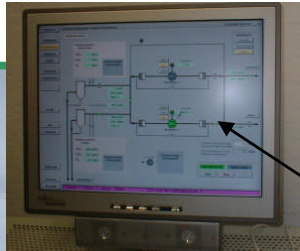
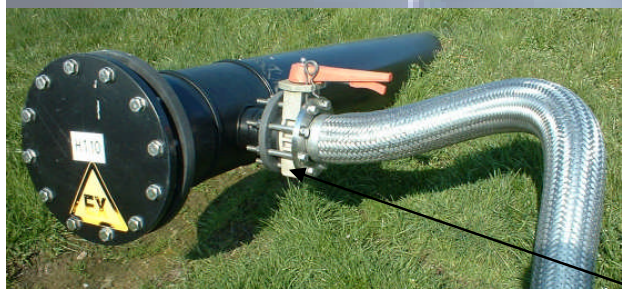
Stachowitz, Sept. 05

# LFG - Systems

DAS – IB GmbH, LFG & Biogas - Technology  
[www.das-ib.de](http://www.das-ib.de) , phone & fax #49 / 431 / 683814

## The big EASY

## If the gas extractions system runs



See: Author Wolfgang H. Stachowitz  
15 Years of experience in the field of LFG disposal ..  
Sardinia 2001, 8th International ...

## Global Warming Potential (GWP)

DAS – IB GmbH, LFG & Biogas - Technology  
[www.das-ib.de](http://www.das-ib.de) , phone & fax #49 / 431 / 683814

Greenhouse gas	Estimated lifetime (years)	20 a GWP	100 a GWP	500 a GWP
CO2 (reference)	variable	1	1	1
CH4	12	62	<b>23</b>	7
N2O	114	275	296	156

Extract of: Intergovernmental Panel on Climate Change, Third Assessment Report, 2001 UK and others

**But: COP decision of the world bank to approve the GWP of 21 for methane based on IPCC 1996 – After 2012 GWP will be 23!**

In 1997, after a long period of negotiation, the foundations for worldwide climate protection were laid with the passing of the Kyoto protocol. The target of this agreement is the global reduction of greenhouse gas emissions.

CO2 trading certificates for landfill gas?  
Europe and world wide

DAS – IB GmbH, LFG & Biogas - Technology  
[www.das-ib.de](http://www.das-ib.de) , phone & fax #49 / 431 / 683814

According to the Council of Ministers of the EU (agreement dated Oct 2003, directive 2003/87/EU describes the so-called “**CO2 trading certificates**” as “**authorizations to trade with greenhouse gas emissions**” .

According to addendum II, the greenhouse gases: CO2 (1. Phase),

**CH4 (2008),**

N2O, SF6 and fluorocarbons as well as perfluorinated hydrocarbons **fall within the scope of this directive.**

**The Kyoto protocol only governs the emission trade between states.**

**CO2e – Trading  
EU - Time schedule**

**DAS – IB GmbH, LFG & Biogas - Technology**  
[www.das-ib.de](http://www.das-ib.de) , phone & fax #49 / 431 / 683814



2004

2005

2006

**30. Sept.:**  
**Application  
and allocation  
to the plants  
(NAP)**

**28. Febr.:**  
**First expense / issuing  
of certificates for  
2005**

**30. April:**  
**1. Clearing / account  
(= First check)**

**Prices high?**

**CO2 trading certificates for  
landfill gas?**

**DAS – IB GmbH, LFG & Biogas - Technology**  
[www.das-ib.de](http://www.das-ib.de) , phone & fax #49 / 431 / 683814

**Amount of costs per t CO<sub>2</sub>e – reduction ??**

**Market price / current price per t CO<sub>2</sub>e – reduction ??**

Potential buyers – potential sellers  
 source: BMfUNR, Mr. F. Schafhausen

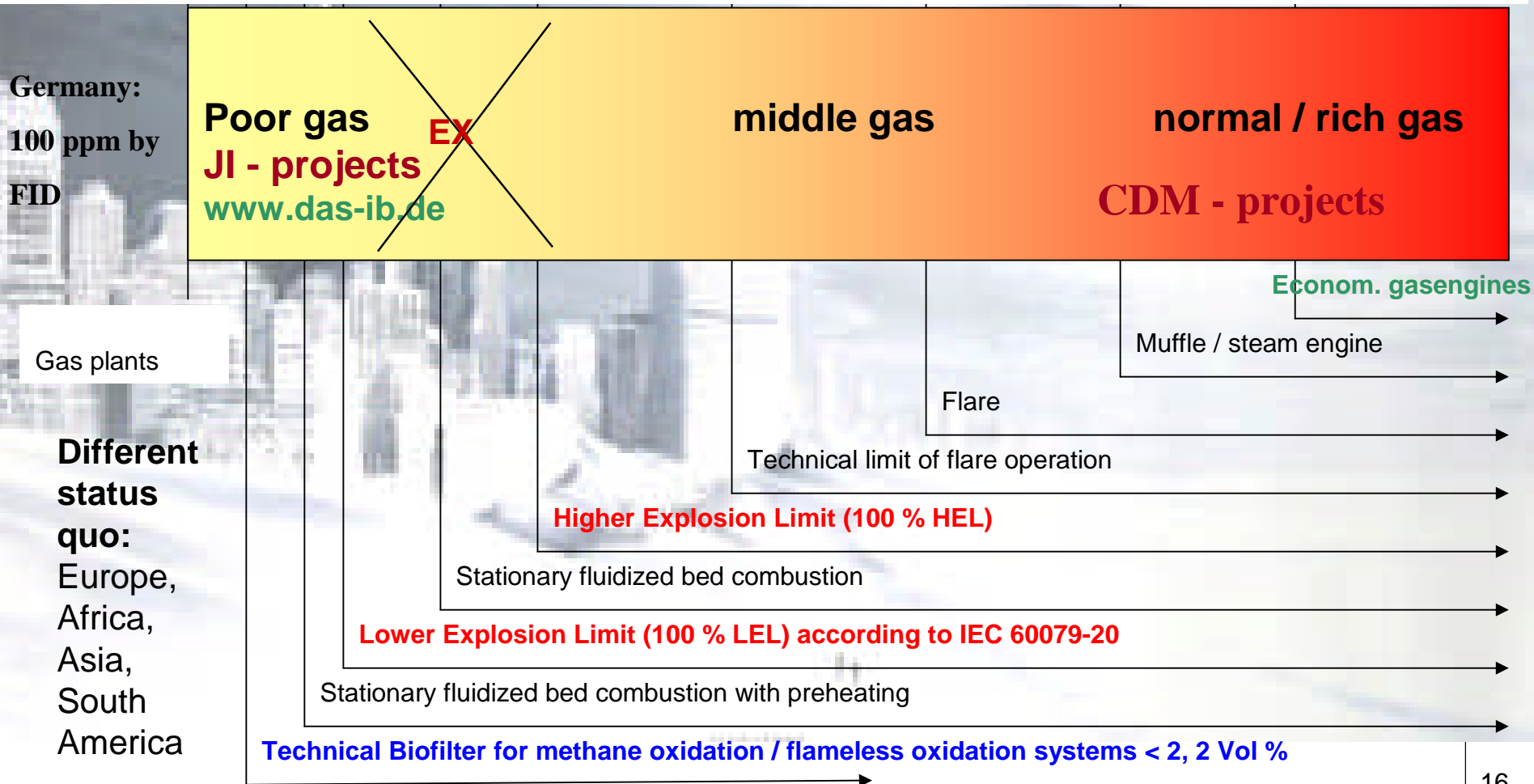
**DAS – IB GmbH, LFG & Biogas - Technology**  
[www.das-ib.de](http://www.das-ib.de) , phone & fax #49 / 431 / 683814

EU-member state 12, 000 buyers in Europe	CO2-Emission 1990 (Basis)	CO2-Emission 2003	Target 2008 - 2012	difference in Mio. t CO <sub>2</sub> -Äquivalenten
<b>Belgium B</b>	146,8	147,7	135,8	- 11,9
<b>Danmark DK</b>	69,4	74,0	55,0	- 19,0
<b>Germany D</b>	1.248,3	1.017,5	986,2	- 31,3
<b>Finnland FIN</b>	70,4	85,5	70,4	- 15,1
France F	568,0	557,23	568,0	+ 10,8
Greece GR	111,7	137,6	139,6	+ 2,0
<b>Ireland IR</b>	54,0	67,6	61,0	- 6,6
<b>Italia I</b>	510,3	569,8	<b>477,1</b>	- 92,7
<b>Luxemburg L</b>	12,7	11,3	9,1	- 2,2
<b>Austria A</b>	78,5	91,6	68,3	- 23,3
<b>Portugal P</b>	59,4	81,2	75,4	- 5,8
Sweden SWE	72,3	70,6	75,2	+ 4,6
<b>Espania ESP</b>	286,1	402,3	<b>329,0</b>	- 73,3
United Kingdom UK	751,4	651,1	657,5	+ 6,4
<b>Netherlands NL</b>	213,1	214,8	200,3	- 14,5

**Operation ranges of gas plants**  
 Calorific values Landfill gas utilization:  
 EU 15 (old)

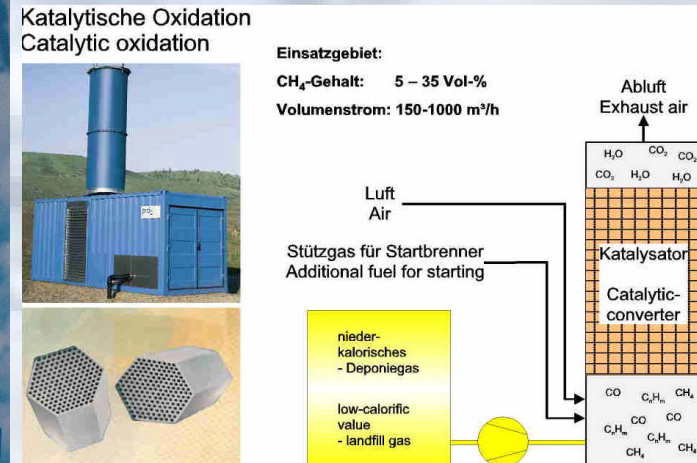
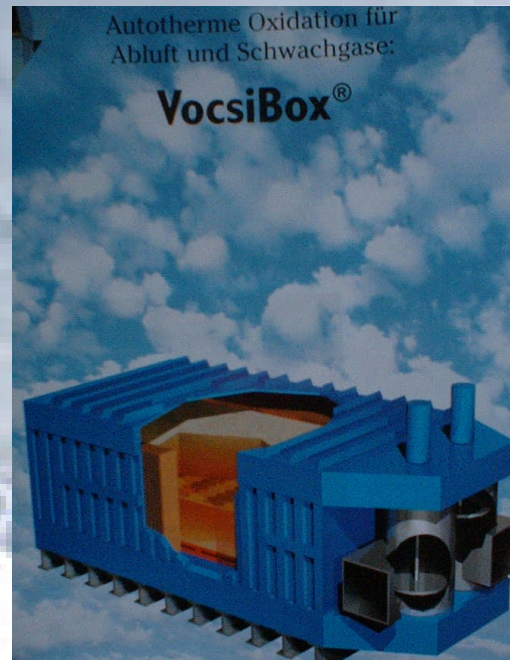
**DAS – IB GmbH, LFG & Biogas - Technology**  
[www.das-ib.de](http://www.das-ib.de) , phone & fax #49 / 431 / 683814

Calorific value	0	0,22	0,4	0,5	1	1,5	2	2,5	3,5	4,5	kWh/m <sup>3</sup>
Methane content		2,2	4	5	10	15	20	25	35	45	Vol: % CH <sub>4</sub>





Real technical solutions for poor gas quality



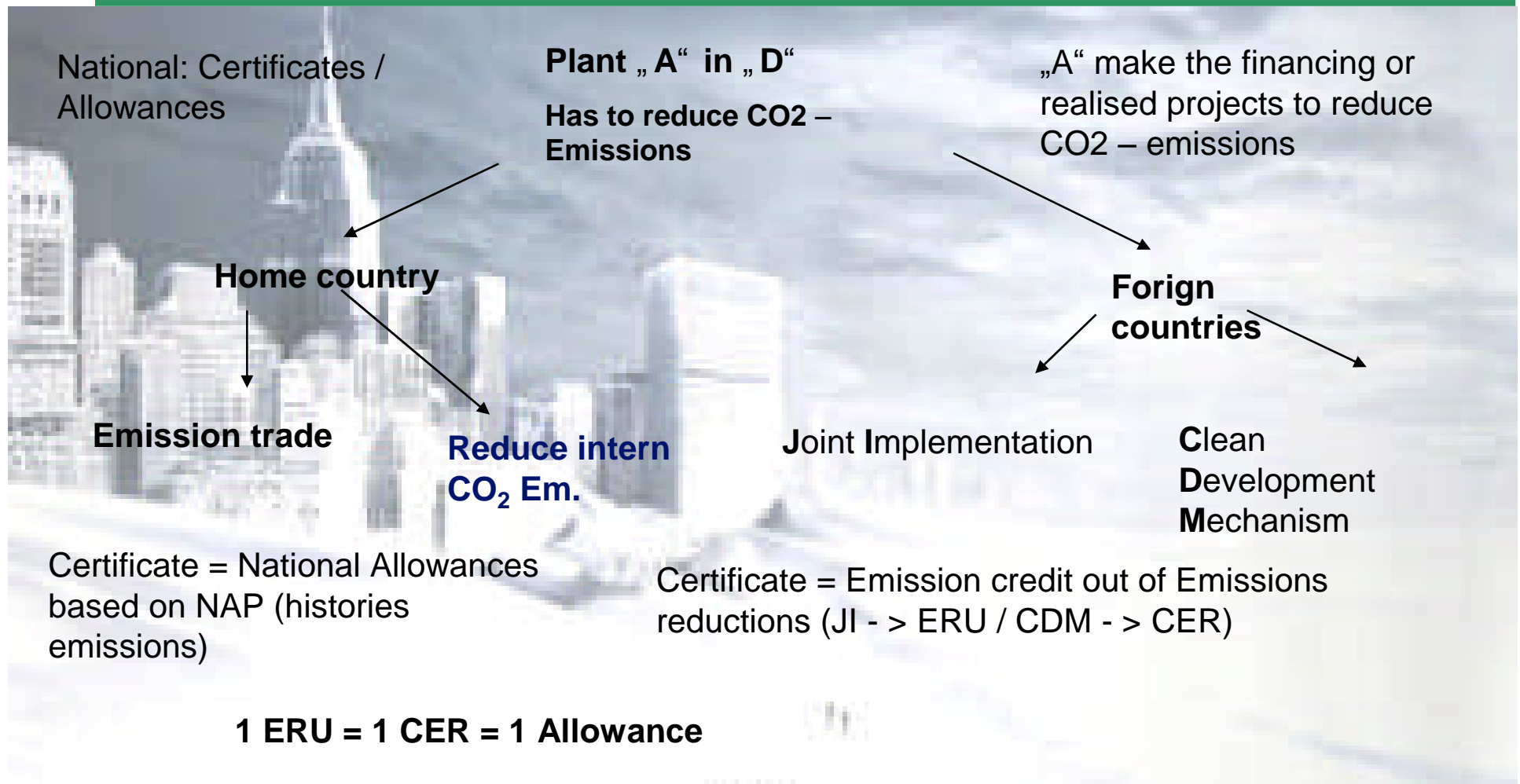
We have two low methane projects as pot. II – projects (“PIN – Stadium”) in Germany !!

DEPOPTHERM® (UMAT GmbH) und VocsiBox® (HAASE AG), non catalytic systems pro 2

or technical biofilter ???

## Allowances / Certificates

DAS – IB GmbH, LFG & Biogas - Technology  
[www.das-ib.de](http://www.das-ib.de) , phone & fax #49 / 431 / 683814



**a) First assessment**

For the creation of a first assessment (assessment of the CO2 savings documented on one or two pages), a cost of approx. 1,000 Euro is estimated (exclusive of taxes and travel expenses). The customer (e.g. the operator of a landfill) will be refunded for these costs when commissioning the complete study (a to c). On this basis, the customer must decide whether or not the project shall be continued.

**b) Project Idea Note (PIN)**

In case the project should be continued, the next step would be the implementation of the so-called Project Idea Note (PIN). The PIN is supposed to document the project technically, economically and legally. All influences that the system may have globally must also be taken into consideration and, vice versa, the global influences on the system. This finally indicates whether or not there are any objections to the project and to what extent CO2 quantities will be credited to the customer. This document also enables the customer to make provisional contracts with potential buyers. The costs are very high: they amount to approx. 10,000 Euro plus VAT, travel expenses (Europe) res. to 15,000 Euro plus VAT and travel expenses (Asia).

**Costs of the indispensable study  
to be continued**

**DAS – IB GmbH, LFG & Biogas - Technology**  
**[www.das-ib.de](http://www.das-ib.de) , phone & fax #49 / 431 / 683814**

### **c) Project Design Document (PDD)**

**For certification purposes, a so-called Project Design Document (PDD) is required, consisting mainly of the PIN, monitoring and validation plan. Depending on the complexity, the costs will be between 15,000 and 20,000 Euro plus taxes and travel expenses (Europe) res. between 25,000 and 30,000 Euro plus taxes and travel expenses (Asia). The costs for the establishment of the PIN will be charged proportionally.**

**These prices may only be specified in more detail after a rough copy has been initially carried out. In addition, costs for certification and fees must be taken into consideration. Estimated range: 15,000 to 60,000 Euro.**

Income, rough estimation  
CDM - projects

DAS – IB GmbH, LFG & Biogas - Technology  
[www.das-ib.de](http://www.das-ib.de) , phone & fax #49 / 431 / 683814

**approx. 2 to 6 Euro per ton CO<sub>2</sub> are noted at present.** This price may rise up to 10 – 12 Euro per ton CO<sub>2</sub> adequate.

**Rough estimate:** 2000m<sup>3</sup>/h landfill gas \* 0.7 kg / m<sup>3</sup>/h \* 8,760 h pa \* 23 GWP (CH<sub>4</sub> / CO<sub>2</sub>) \* 5 Euro / t CO<sub>2</sub> – adequate \* 0.5 (50 vol % CH<sub>4</sub>) - > **approx. 705,000 Euro pa Income**

Subsequent to the establishment of the first assessment, every operator / customer knows the respective range of saved CO<sub>2</sub> emissions. He will thus be able to recognize at a relatively early stage whether or not the project will be profitable.

**But take care... of your invest – especially for the gas extraction system on side !!**

**You may chose a contract life of 10 years as well as of 3 x 7 years**

Risks –  
and sometimes reality  
in LFG - projects

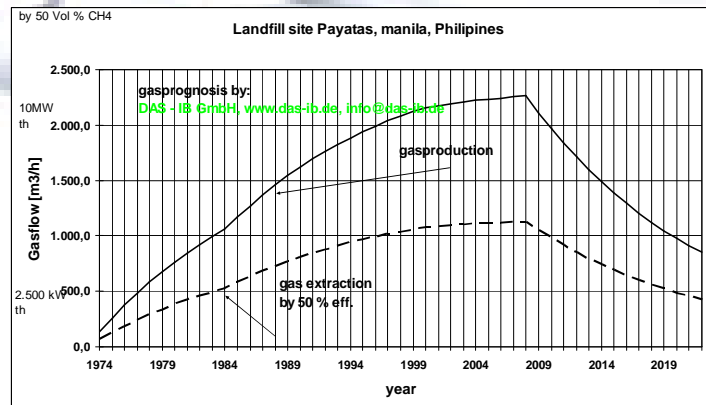
DAS – IB GmbH, LFG & Biogas - Technology  
[www.das-ib.de](http://www.das-ib.de) , phone & fax #49 / 431 / 683814

CDM market comment by Point Carbon CJM August 23rd 2005 page 2

... the first monitoring report for a landfill project gives a negative supply signal.

It showed that in the first year of operation, the project reduced less than 10 % of the 564,000 tonnes of CO<sub>2</sub> e emissions indicated in the project's PDD.

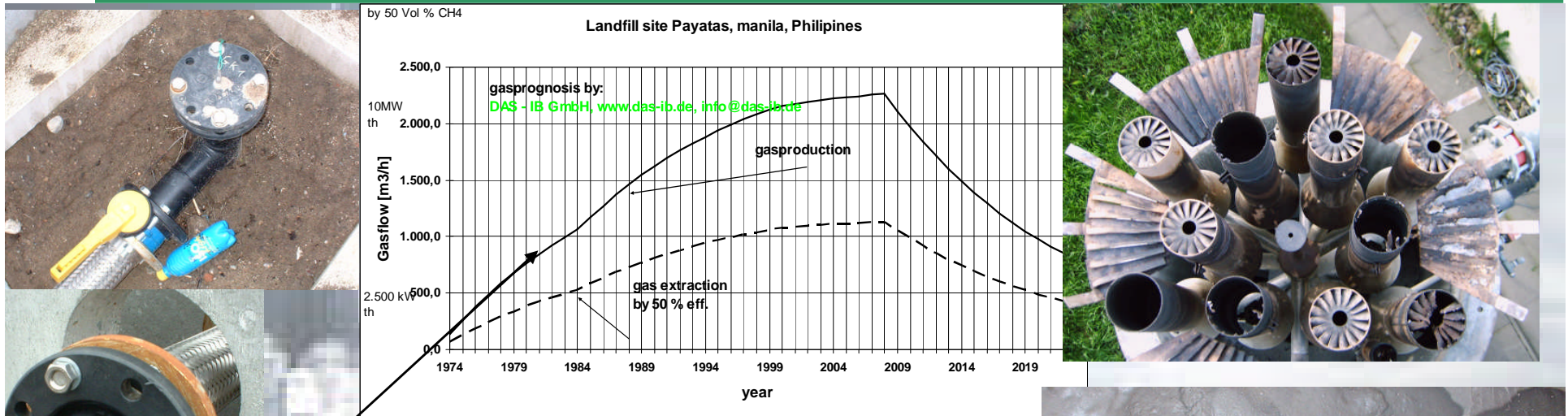
Although this is not expected to be the case for most landfill projects, ..... **BUT**



Stachowitz, X 05

# Risks and sometimes reality in LFG - projects

DAS – IB GmbH, LFG & Biogas - Technology  
[www.das-ib.de](http://www.das-ib.de) , phone & fax #49 / 431 / 683814



See Author Wolfgang H. Stachowitz  
 15 Years of experience in the field of LFG disposal ..  
 Sardinia 2001, 8th International ...



$$Q_{a,t} \left( \frac{m^3}{a} \right) = 1,868 \cdot M \cdot TC \cdot f_{a0} \cdot f_a \cdot f_o \cdot f_s \cdot k \cdot e^{-k \cdot t}$$



# Gas prognosis ... and test cell with mobile system

**DAS – IB GmbH, LFG & Biogas - Technology**  
[www.das-ib.de](http://www.das-ib.de) , phone & fax #49 / 431 / 683814

Kostenlose Prognose zum Testen – Free Test Prognosis



mobile gas booster with flare, right: Data necessary for our gas prognosis model – see: [www.das-ib.de/gasprognosis.htm](http://www.das-ib.de/gasprognosis.htm) - > gas prognosis

<b>Deponieangaben zur Erstellung einer Gasprognose:</b>	
<b>Specification of landfill conditions for predicting landfill gas generation:</b>	
<b>Standort der Deponie (Name, Adresse, Land etc.):</b>	
<b>Location of the landfill site (name, address, country ....):</b>	
Einbaubeginn (Verfüllung): Start of landfill operation:	
Einbauende: End of landfill operation:	
Einbaumenge pro Jahr: Landfill waste p. a. (tonnes/a) [m <sup>3</sup> /a]:	
<b>Zusammensetzung des eingelagerten Mülls (Müllsorten in % oder t):</b>	
<b>Composition of landfilled waste (type of residues in % or t):</b>	
Hausmüll: MSW (municipal solid waste):	
Sperrmüll: Bulky refuse:	
Bauschutt: Rubble, demolition waste:	
Organischer Müll: Organic waste:	
Hausmüllähnlicher Gewerbeabfall: Ordinary industrial residues (similar to MSW):	
Produktspezifischer Gewerbeabfall: Industrial residues from production processes:	
Klärschlamm & Straßenkehrschutt: Sewage sludge & road sweepings:	
Sonstiges Abfälle: Other waste: _____	
Basisabdichtung:       ? Ja       ? Nein:	
Landfill bottom liner:   ? Yes    ? No:	
Oberflächenabdichtung:  ? Ja       ? Nein:	
Surface sealing/Landfill cap: ? Yes    ? No:	
Dünnschichteinbau (ab wann):	
Thin layer compaction (since ....):	



## 2.3 Equivalents of the trade with CO2 certificates

DAS – IB GmbH, LFG & Biogas - Technology  
[www.das-ib.de](http://www.das-ib.de) , phone & fax #49 / 431 / 683814

Price per "t" CO2e	"Stock exchange"	Source
3 – 5 \$	CDM market prices	By author (Jan.05 – CDM– projects with Biogas / LFG > 100.000 t pa) CER
40 €	Fine from 2005 on for companies for each ton of "unapproved" CO2	Council of the European Union – Political agreements dated December 11th 2002, 14935/02 "Greenhouse gas emission allowance trading", article 16
100 €	Fine from 2008 on for companies for each ton of "unapproved" CO2	Council of the European Union – Political agreements dated December 11th 2002, 14935/02 "Greenhouse gas emission allowance trading", article 16
20 – 25 €	EUA market prices	Für EU – Allowances (CO2 1. period) EUA / updated: August / September 2005
5 -6 €	JI - market prices	By the author (Jan.05 – JI – Projekte im „Forward – contract“ > 10.000 t pa) ERU

Actual prices / Costs low methane  
JI -projects:

DAS – IB GmbH, LFG & Biogas - Technology  
[www.das-ib.de](http://www.das-ib.de) , phone & fax #49 / 431 / 683814

a) High quantity, low loading (for non catalytic systems, **Poor gas system – German standard**)

1500m<sup>3</sup>/h mixed gas, loading 1 vol. % CH<sub>4</sub>, energy demand approx. 15 kW el,  
operating hours p.a. 8400h

Costs arising in this example: **approx. 10 - 15 € / t CO<sub>2</sub> equivalent**

Actual prices / Costs Biogas projects  
methane CDM - projects:

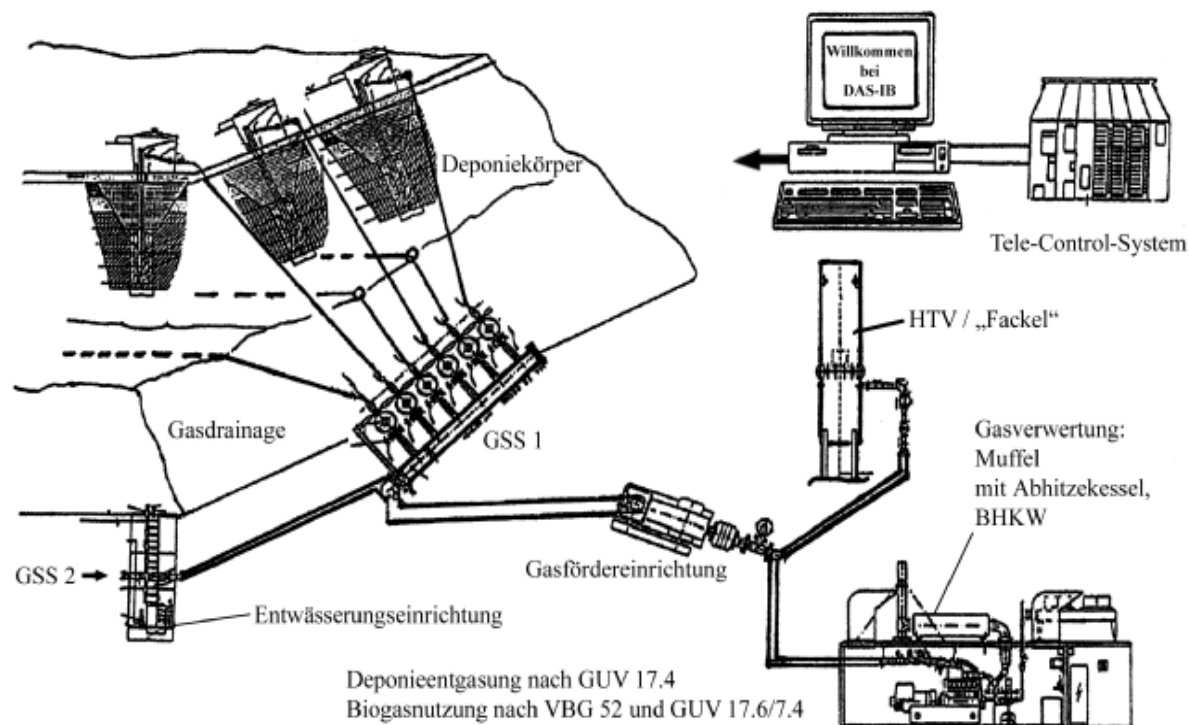
DAS – IB GmbH, LFG & Biogas - Technology  
[www.das-ib.de](http://www.das-ib.de) , phone & fax #49 / 431 / 683814



> 250m<sup>3</sup>/h biogas (approx. 1 MW th) over a period of 10 years

Costs arising in this example: **approx. 3,7 – 5,5 € / t CO<sub>2</sub>** equivalent

# DAS – IB GmbH – LFG- & Biogas - Technology



**Thank you for your attention & Think big !**

**Remember: Learn CO<sub>2</sub>e – Trading ...and get into the pole position.  
Or be: Best of the Rest.**

DAS – IB GmbH

LFG Technology, [www.das-ib.de](http://www.das-ib.de)

Biogas-, Sludge gas and Landfill gas technology:

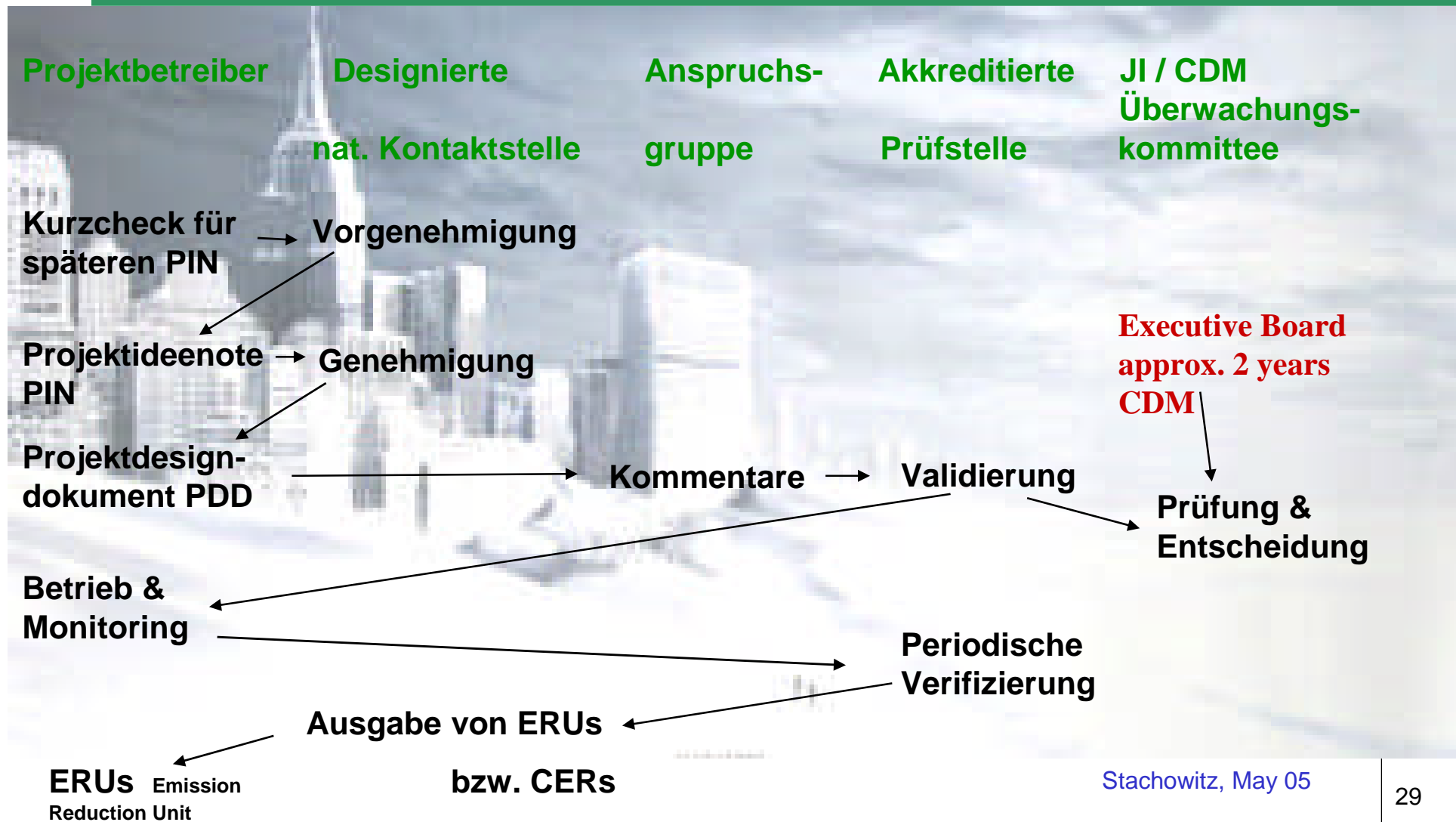
- Consulting, planning & design, project management
- Familiarisation and training of system operators
- Independent Expert & Specialist
- Expert in ATEX – Zoning according to 99/92/EG and 94/9/EG

**SELECAO – Brazils: LFG – projects**

**Salvador da Bahia (R, unfccc) and Nova Gerar (R, unfccc), Bandeirants, Caieiras, Paulinia, Lara, Tremembe, Sao Joao, etc.**

**(Erweiterter JI / CDM– Projektzyklus)**

DAS – IB GmbH, LFG & Biogas - Technology  
[www.das-ib.de](http://www.das-ib.de) , phone & fax #49 / 431 / 683814



**2.5 Possible proceeds and costs involved DAS – IB GmbH, LFG & Biogas - Technology due to the trade in CO2 certificates [www.das-ib.de](http://www.das-ib.de) , phone & fax #49 / 431 / 683814 concerning the application of the technologies**

As the following paragraphs deal with landfill gas (with CH4 as the main gas), we are talking about CO2 certificates. However, in the narrower sense these are "carbon dioxide equivalents" with an equivalent global warming potential.

### ***2.5.1 Requirements***

**a) „Project document“ / „Base line“**

In these documents, CO2 reductions and technology are determined, as well as substitutions and the reference situation.

**b) Validity / validation**

During validation, the method applied for the determination of the emission reduction is examined and fixed one single time.

**c) Monitoring report**

This report documents and proves the relevant data concerning the emission reduction. An observation period is fixed.

**d) Certification**

Subsequent to the examination of the monitoring report according to validation, a CO2 reduction quantity is certified for the observation period (usually a calendar year).

**Phases b) and d) must be accompanied and confirmed by independent departments, phases a) and c) may be supplied by the project-executing organization itself.**

**Matters of facts by the  
Anthropogenic (undesired)  
greenhouse effect**

Rise in temperature of the ground-level atmosphere by 0.3 to 0.6 °C since the late 19th century, according to: Assessment Report IPCC dated 1994.

The "US Global Change Research Information Office (GCRIO)" ascertains a rise in temperature of 1 °C since 1860

According to the "US Global Change Research Information office – GCRIO", it is due to this temperature rise, that the ocean level has risen by 10 to 25 cm (reduced by the expansion of the water, meaning in addition to the latter).

The "United Nations Framework Convention on Climate Change" expects a temperature rise of 1 to 3.5 K by the year 2100.

**Examples:**

- \* In the Sahara, a rise in temperature of 0.1 to 0.2 K at constant rainfall will result in an expansion of the desert by approx. 100 km.
- \* In England, a temperature rise of 0.5 K will prolong the vegetation period by approx. 14 days.

**Death of 15 – 37 % of animals and plants until 2050** (Nature and taz 8.I.04)

Deadline of a study ...

DAS – IB GmbH, LFG & Biogas - Technology  
[www.das-ib.de](http://www.das-ib.de) , phone & fax #49 / 431 / 683814

In order to be able to roughly estimate the CO<sub>2</sub> savings that may be taken into account for certificates, the process chains (current situation < -- > future situation) must be documented:

**1) What is the current situation?**

What happens to the landfill gas/waste at present? We need the input quantity, landfill gas quantities, composition of the gas, landfill size (waste quantities and type -> gas prognosis), applied energies (process heat and electricity; how is the latter produced at present?) and the current CO<sub>2</sub> emissions.

**2) What is the situation like subsequent to treatment (e.g. co-generation sets, gas engines, low methane oxidation systems)?**

Besides the input quantity (landfill gas) that should be identical, information is required for the new process.



Deadline of a study ...

DAS – IB GmbH, LFG & Biogas - Technology  
[www.das-ib.de](http://www.das-ib.de) , phone & fax #49 / 431 / 683814

to be continued

In order to be able to roughly estimate the CO<sub>2</sub> savings that may be taken into account for certificates, the process chains (current situation < -- > future situation) must be documented:

**3) When gas is converted into electricity, what does the electricity replace?** Electricity from the supply network or an individual plant. In the first case, the energy from the supply network or 'grid' consists of a mixture of water power, electricity generated in nuclear power plants, and coal-based electricity generation. Therefore the amount of CO<sub>2</sub> produced per kWh for each of the different technologies is required. In the case of an individual plant, the description of the system is required (e.g. combined oil heat and power station). Where is the heat supposed to go, is it used? (-> further CO<sub>2</sub> certificates)

**4) How is the plant financed?**

Are there any subsidies granted? Does any particular compensation exist for the electricity (similar, for example, to the renewable energy act (EEG) in Germany or the NFFO in the UK)? Is it a private investor; is it an "inland" investor? Is the measure undertaken cost-effective? Do acts or guidelines stipulate this measure at present or will they do so in the future?