

Landfill gas collection, treatment and utilization - 20 YEARS OF EXPERIENCE IN THE FIELD OF LANDFILL GAS DISPOSAL STANDARDS, PROBLEMS, SOLUTIONS, AND PROCEDURES

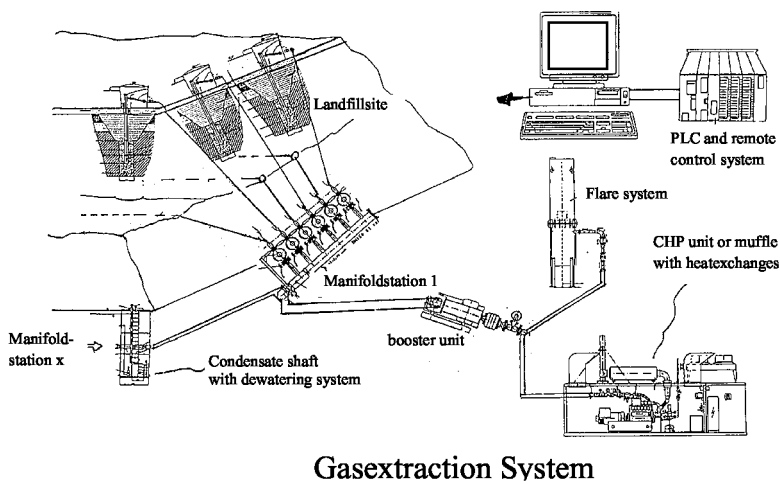
WOLFGANG H. STACHOWITZ, DIPL.-ING. *

SUMMARY: 20-25 years ago, when the disposal of landfill gas (LFG) first started to become a public issue, only little experience had been gained in this field. Much has been achieved by now if we look at today's state-of-the-art in landfill gas engineering. Initial errors often made in the past included, for instance, the construction of oversized gas utilization facilities due to a lack of fundamental data, or major damage to gas collection systems, because uneven landfill settlement was not taken into account. From the point of view of plant engineers, even today there are still difficulties that require special attention and sophisticated know-how. This abstract provides an overview on the developments in landfill gas engineering throughout the years. It also refers to the difficulties experienced today.

1 DIMENSIONING OF LANDFILL GAS EXTRACTION FACILITIES

A gas prognosis, as accurate as possible, is indispensable for the correct dimensioning of a LFG extraction facility. Today, we use computer programs to establish the gas prognosis for a landfill site. These computer programs, however, are not based on mere mathematical logic, they also take plenty of empirical data into account. This way, the computer provides us with values near to reality. Bear in mind, that any gas prognosis can only be as good as the quality of data used. The specific programs we have developed at DAS – IB GmbH based on models of Rettenberger / Weber and our experience are constantly being optimized with data gained from practical experience in plant construction and operation. It is recommended to test the expected gas quantities with a mobile flare and booster unit for at least 6 months' before finally implementing a stationary plant.

Figure 1 - Landfill gas extraction system (wellheads, manifold station, dewatering system, condensate wells, booster and flare system, gas utilization facility, telecontrol system) and our mobile flare and booster system



2 GAS COLLECTION SYSTEMS

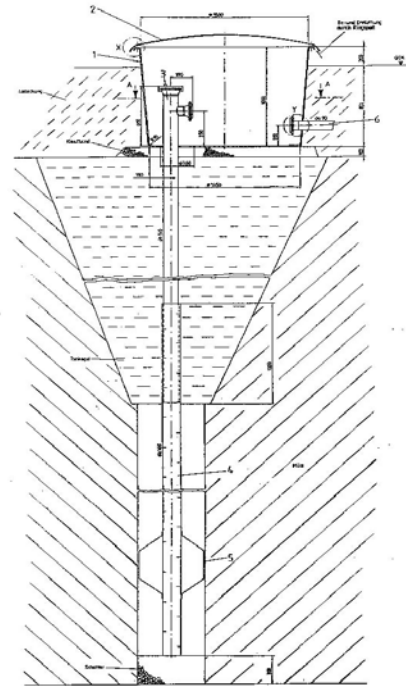
In the past, most gas collection systems were of simple design, equipped with low-budget piping systems (e.g. quality of material, pipe diameter) and lacking any accessory facilities such as manifold stations with valves and sample points for measurement, or couples to control the quality and quantity of the gas extracted from the landfill. It was not possible to carry out measurements on single gas wells and optimize their performance. Low gas collection rates and high costs for the optimization of the entire system called for a change of design. Today, every single gas well is connected to the closed circular pipeline of the gas collection system. The connection points – access provided at any time – are located in stationary buildings, the so-called “manifold stations”, installed above ground or underground. From here, it is possible to monitor and optimize the performance of every single gas well by analyzing and adjusting the parameters (gas flow rate, low pressure, quality and temperature of the gas). Regular controls and adjustments help to achieve optimum gas collection rates. And finally the gas pipe system has to be installed on top of the side and not on the base or ground.

2.1 Gas wells

Extreme but natural settlements in the landfill body occur as a result of the biological conversion of solid waste components into landfill gas. Every cubic metre of landfill gas directly derives from the decomposition of about 1.2 kg of solid matter! In order to take this fact into account and make control possible, the following aspects must be considered when installing gas wells on a landfill site:

1. Use telescopic gas pipes to compensate the settling phenomenon
2. 8 – 10 % of wholes / perforation in the extraction pipe (> PN 6)

3. Fit a bellow expansion joint between the well head and the outgoing pipes
4. Outgoing pipe: 110 mm minimum diameter, with a gradient of 3-5% to prevent water seals
5. Provide a surrounding layer of clay and loam with sufficient thickness to prevent air entering the gas collection system from boundary areas
6. Mount sample points / couples and manual butterfly valves on the gas supply pipes and make sure they are put in the right places
7. Provide sufficient length of pipe upstream and downstream of the flowrate measuring device
8. Provide facility to enter a remote-controlled camera for video inspection of gas network



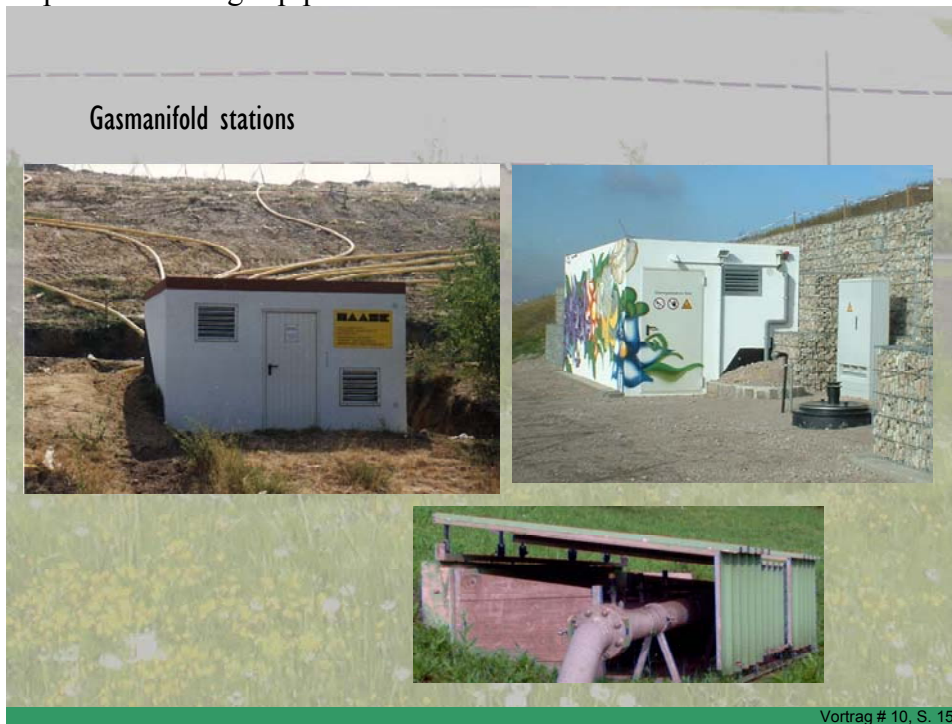
Gaswell and pipe system

2.2 Gas manifold stations

Inside the manifold stations there are connections from the individual gas wells to the circular piping system going all around the site. For sampling and measuring purposes (gas analysis, temperature, pressure, flow) the connections should be fitted with 1/2" and 3/4" grumbles as a minimum standard. Upstream and downstream the flowrate measuring device there must be a sufficiently long piece of pipe to provide an undisturbed intake and discharge of the gas. This will prevent faulty measurement as a result of turbulences in the gas flow. The length of test pipe is determined by multiplying the pipe diameter by a minimum of 10. Manual butterfly valves will be fitted to the downpipe, but their axis may not be vertical in order to prevent corrosion and problems caused by condensate and frost.

Every manifold station may be equipped with an automatic device for the pressure-controlled drainage of gas pipelines. In dependence on the capacity of the compressor used, small water seals will automatically be drained from the pipes. It is also recommended to provide a T-piece

with a blind flange. This may later be used to enter a remote-controlled camera for video inspection of the gas pipelines.



2.3 Condensate rejection

Inside the landfill body, landfill gas is generated at a temperature of approximately 60-80°C and with a humidity of 100%. On its way from the gas wells to the flare stack and the gas utilization facilities the gas cools down and condenses. In order to avoid water seals, the gas extraction pipes have a gradient and are equipped with condensate traps. Simple solutions include siphons which recirculate the condensate to the landfill body. However, this is only recommended for sites with a landfill bottom liner. Alternatively it is possible to install condensate wells, equipped with different types of discharge facilities (deflectors, diaphragm separators, cyclone collectors, or demisters). The condensate is pumped from the condensate well or removed by a collection lorry.

In order to prevent water from being sucked into the gas pipes, the minimum hydraulic gradient between the gas pipelines and the maximum water level should correspond to the maximum suction pressure of the compression units. Example: A blower with 150 mbar suction pressure (850 mbar g) requires a safe distance of 150 cm between the maximum water level and the gas extraction pipe. This distance is checked by level measuring to prevent damage to plant facilities (damage caused by water). In warmer countries an extra device should monitor the minimum water level and switch off the booster system in the event that values fall below the minimum level (oxygen influx, explosion hazard).

2.4 Design concept for gas collection systems

As it is described above, the gas extraction system consists of branches to the gas wells and a circular pipeline that extends over the entire landfill. Apart from measurements and optimization work on the gas supply system and on the gas wells the surface of the landfill body should be

inspected at least once a year with a flame ionisation detector (FID). This is the only way to find out if in some areas gas escapes uncontrolled into the atmosphere. Additional gas wells may later be installed in these places. In a budget calculation the distance between gas wells should not exceed 50m, because as a matter of experience the collecting area of a gas well is about 20-30m.

3 MECHANICAL ENGINEERING

3.1 Gas compression unit / Booster unit

or gas booster station

Dependent of the location and the weather, a landfill gas booster unit should be housed in a closed or open building that provides not only lighting and heating, but also ventilation and deventilation facilities and a CH₄ gas detector for explosion protection. Minimum standard equipment should be as follows:

1. Compression unit
2. Shut-off and control valves and other technical devices for flow regulation, i.e. bypasses and frequency converters to drive the booster motor
3. Measuring devices: total flux, suction pressure, delivery pressure, gas temperature

Flux may also be indirectly determined with the work's bench performance diagram (provided by the manufacturer of the system) and the equation $p = f(F)$.

In Germany, a stationary gas analysis system is mandatory to protect installations from explosion hazards. This prescription and other regulations in force in Germany may differ from those to be observed in other countries. Same applies to materials, fittings, and structural components used, which - according to German standards - require marks of conformity and certificates issued by BAM and PTB authorities. In any case, plant operators should carefully check the material and perfect functioning of components used. In no case should they accept material made with Al-Ni-K o metals.

Two important notes with regard to safety engineering:

1. If a facility for explosion protection is to be installed, the gas analysis system should indicate the concentration of CH₄ in the gas. Later, when the landfill gas serves as fuel for power generation, this signal can be used to control the gas engines.
2. The author of this abstract is confident that according to the triangular explosion protection diagram depicted in Figure 2 there is absolutely no possibility that explosive gas mixtures will continuously be delivered to the gas engine.

Ternary (three component) diagram, atmospheric

For the explosion area methane / air / CO₂- N₂ - mixture

Acc. to Tabasaran / Rettenberger (UBA – Forschungsbericht 12/1982, Nr. 10302207 Teil1)

DAS – IB GmbH / LFG Technology

Flintbeker Str. 55

D 24113 Kiel

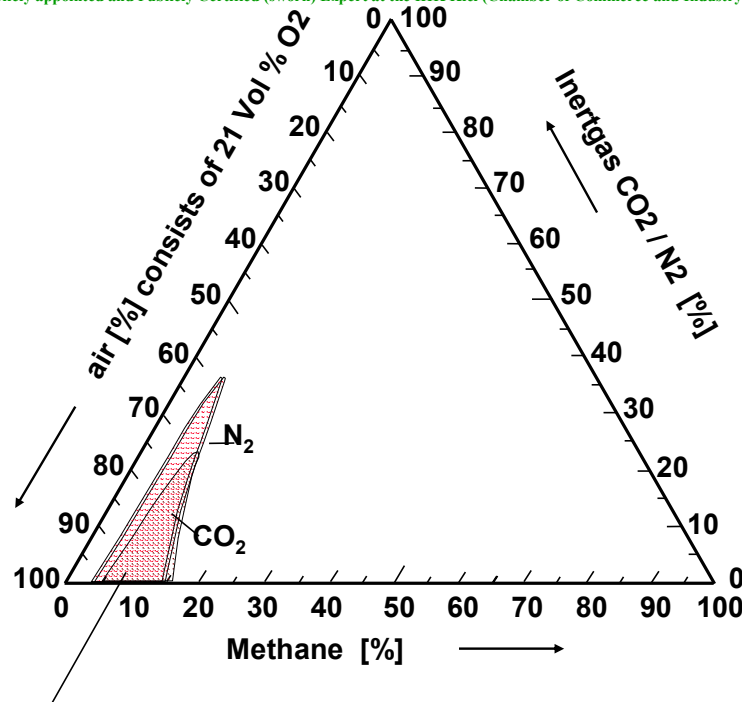
Phone & Fax # 49 / 431 / 683814 www.das-ib.de info@das-ib.de

Biogas, sewage gas and landfill gas technology:

•Consultation, planning, projecting

•Training of operating personnel

•Expert services (among other things in accordance with § 29a BImSchG (Federal Immission Control Act) and a publicly appointed and Publicly Certified (sworn) Expert at the IHK Kiel (Chamber of Commerce and Industry)



Explosion area : Exceeding of 11,6 Vol % oxygen
and
between 4,4* (5)**Vol % methane (100 % LEL) and 15
(16,5) Vol % methane (100 % HEL)

* IEC 60079-20 and PTB ** EN 50054

Figure 2 – Explosion limit of gas mixtures: Methane/Air/ CO₂ and Methane/Air/ N₂; concentrations are indicated in percent by volume in relation to the overall gas mixture; 16,5 (15) % by vol. CH₄ / explosion limit, i.e. 5% (4,4) CH₄ = 100% LEL

In general, it will not be necessary to install a gas analysis system inside the booster unit if other technical installations already provide an indirect analysis. Two examples:

1. Engines fuelled with landfill gas are designed for operation with methane concentrations of at least 35-40% CH₄ by volume. When running under full load conditions, they may even need a concentration of 50% CH₄ by volume. For technical reasons, these systems will automatically be cut off in the event that the methane concentration is too low.
2. Dependent on the dimensioning of the burner system, flare units made by different manufacturers are designed to automatically cover methane concentrations of ± 5 to 10% by volume. In the event of a higher variation of CH₄, the UV-sensor used for flame monitoring

will automatically shut down the system.

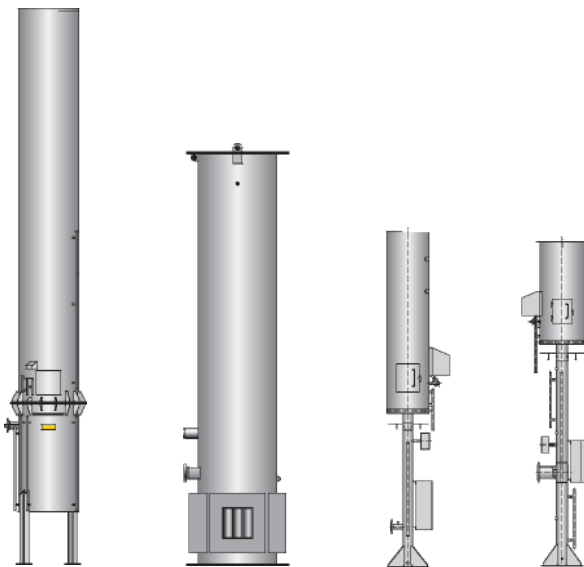
3.2 Flare units / High temperature combustion

In the past, simple flare stacks with open combustion and large visible flames were used to burn the landfill gas (“candle” flares). As these installations did not meet any emission standards at all, they were gradually replaced by flares with a closed combustion. Early flare types did not have any insulation, whereas today they are equipped with an insulated combustion chamber to make operation possible at a constant temperature for the entire turndown.

State-of-the-art high temperature flares burn the gas at temperatures of up to 1,000°C by a retention time 0.3s . The combustion chamber of such flares has a 100mm insulation of ceramic liners. Exhaust gas retention times can be clearly defined. In general, manufacturers also provide facilities for continuous temperature regulation of the hot exhaust gas, i.e. thermocouples, controllers and fresh air regulation (louvers).

Figure 3 shows the different types of flare stacks currently in use. – Flare designs (from left to right)

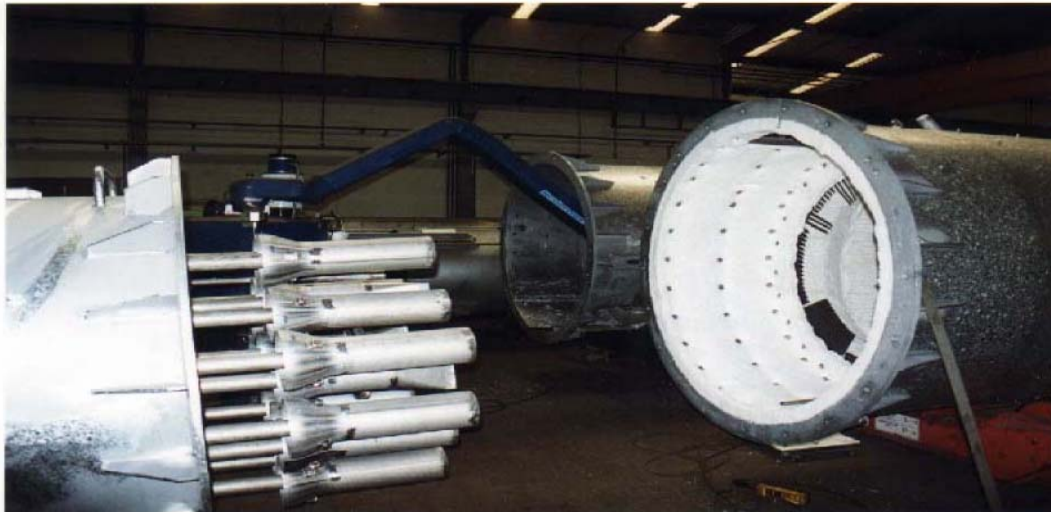
- HTV:** High temperature flaring at 1,200°C; with ventilator and 0.3 seconds retention time
- HTN/MTN:** High/medium temperature flaring at 900°C – 1,000°C; with natural ventilation and 0.3 sec. retention time
- MTU:** Medium temperature flaring at 800°C to 1,000°C; uninsulated flare stack. 0.3 seconds retention time
- LTO:** Low temperature combustion; flare with open combustion (“candle” flare)



For plant operators it is important to know that flare manufacturers interpret the term „retention time“ in different ways. Definitions include “from top of burner”, “from within the flame”, or “from above the maximum point of the flame” and this explains why the manufacturers’ specification of the height of a flare stack may differ. The diameters also depend on the combustion temperatures. The slimmer and higher a high temperature flare is

designed, the higher the combustion temperature will be for the entire range of control. Furthermore, there is a direct influence on the length of time the exhaust gas is retained from the point of the flame. The larger the diameter of the flare body, the lower the combustion temperature will be during operation with partial load. In the low load range, at a firing performance of less than 70% the combustion temperature will be reduced to about 80%. A firing performance of 30%, however, will reduce the temperature to 50%.

Figure 4 – Ceramic lining inside the flare stack (insulation)



Furthermore, plant operators should pay special attention to the proper fitting of the ceramic insulation. The so-called “clips” are a relatively cheap solution, but due to scale loss they will soon fall off during full load operation and need to be replaced, increasing the cost of plant operation and maintenance. Such disadvantage is avoided with an insulation that is screwed to the flare body from the outside.

In any case, the flare should not be covered, as this would cause emissions to be deviated, increasing immissions on the site itself. The reflex of a cover or hat would also attract birds and insects and cause their death when they fall into the flare stack. Modern burner systems do not require a cover. They are not disturbed by rain or snowfall, not even during ignition.

3.3 Landfill gas utilization

In general, gas engines, steam engines and gas turbines may be used to generate power from landfill gas, but commercial and ecological criteria should determine if power generation is profitable for the landfill management. It is important to keep in mind that nowhere in the world gas utilization can be considered profitable if the investment cost for gas extraction systems and power generation facilities is included in the cost estimate. If, however, the gas extraction system is excluded from calculations, because for ecological reasons (“global warming”) it would be required anyhow, and if only the cost of a power generation facility is taken into account, then the operation of a such a plant can be considered profitable. Other important aspects are the quality of the landfill gas and the possibility to market not only the exhaust heat and the heat from the engines, but also the power generated.

Most difficulties experienced with the quality of the gas are due to excessive concentrations of

fluorine, chlorine and siloxane compounds in the raw gas. Gas purification by refrigeration or adsorption on activated carbon helps to solve such problems.

The best energy balance for a LFG power generation plant and the least line loss are produced when both the heat (from the exhaust and the engine cooling water) and the electricity generated are used to supply not only the facilities on site, but also consumers in the vicinity of the landfill site. The most simple solution from the economic point of view is to export the electric power to the local grid. These considerations should be taken into account when choosing the technical plant components: Possible options are gas turbines, gas engines, steam engines, and steam turbines with a secondary muffle and exhaust heat recovery.

In some European countries, limiting values for exhaust emissions must be observed. This may have an influence on the design and efficiency of the engines used. The old Jenbacher engine JES320, for instance, has an output of 826 kW_{el.} when operating in accordance with German TA-Luft standards. If exhaust emissions are disregarded, however, the same engine has an output of 1,006 kW_{el.}

Gas turbines are not often used, because they operate with higher pressures (10-30 bar) and increase the cost of gas compression facilities. They also have a smaller electric efficiency ratio than gas engines. In general, gas engines are preferred to gas turbines, even for large plants with an output of 60-100 MW as there are some currently in operation in England, Australia and Korea.

The combination of a steam piston engine with a steam turbine is sensible only in the event that LFG with an extremely high pollutant concentration needs to be disposed of in a high temperature flare because it is not suitable for utilization in gas engines. In this case the only alternative is indirect steam generation with a waste heat boiler. The efficiency ratio, however, will be quite low.

3.4 Utilization of landfill gas (LFG)

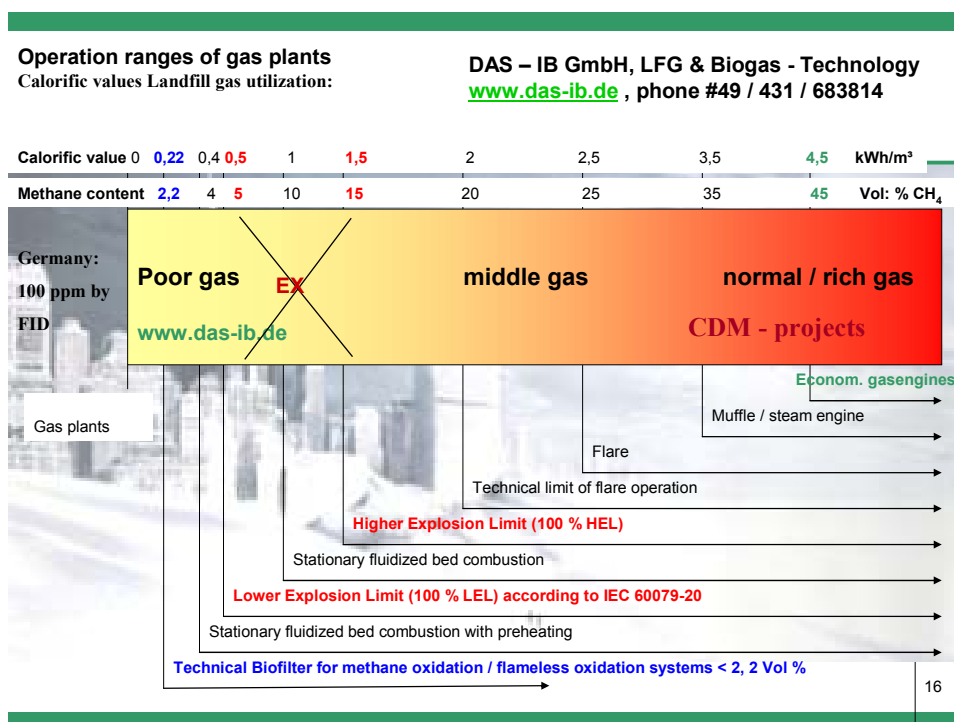


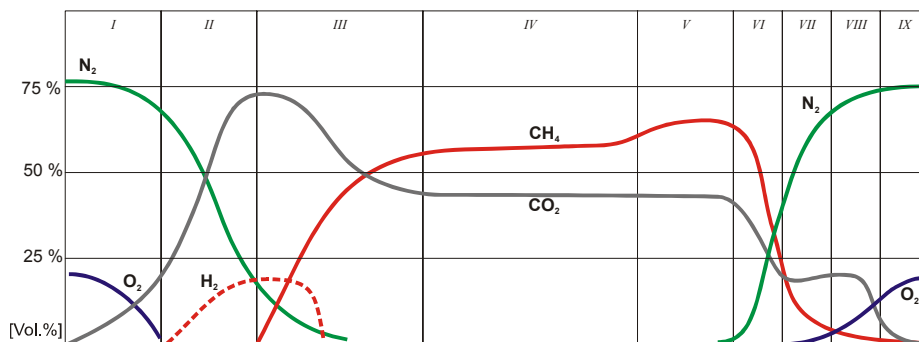
Figure 5 – Operation range of gas utilization facilities

The gas production in an old landfill will continuously decrease. After about 20-30 years of time, the methane content and the gas flowrate will not be sufficient to flare the gas. Anyhow, the gas must be collected and disposed of. First, high temperature flares with auxiliary firing (e.g. natural gas) can be used. With ever decreasing gas quantities and low quality landfill gas, however, the operation of such facilities will be economically inefficient and can not be justified any longer. At the final stage, biofilters are commonly used to reduce odours, but they do not dispose of the methane and thus add to the greenhouse effect. Specially designed biofilters oxidize methane, but constitute a very costly investment and produce considerable operating expenses to keep humidity and temperature at a sufficient level.

Encl. to the Explosion Protection Document:

Create by: DAS – IB GmbH, www.das-ib.de, info@das-ib.de

Course of the landfill gas composition



(Farquhar/Rovers 1973) and long term model of Franzius 1981 and Rettenberger& Mezger 1992

Fig.: 6

REFERENCES

- DAS – IB GmbH / ERBE ENEGETIKA Kft., conference paper Sardinia 2007, Eleventh International Waste Management and Landfill Symposium
- DAS – IB GmbH (editor), conference paper "High noon ... höchste Zeit zu handeln", 2005, ISBN – no.: 3-938775-01-7
- Jenbacher AG: Specifications for Jenbacher gas engines
- Smith, Richard: Guidance on best practice flaring of landfill gas in the UK, Sardinia 99, 7th Int. Landfill Symposium
- Stachowitz, Wolfgang Horst, DAS – IB GmbH, 15 years of experience in the field of landfill gas disposal: standards, problems, solutions and procedures, Eight International Waste Management and Landfill Symposium 2001
- Stachowitz, Wolfgang Horst, DAS – IB GmbH, Carbon trading with landfill gas (LFG) and carbon credits; JI and CDM projects, Tenth International Waste Management and Landfill Symposium 2005
- Stachowitz, Wolfgang Horst, DAS – IB GmbH, Biogas- und Deponiegashandbuch, 6th edition 2007, ISBN – no.: 3-88312-296-3
- UK Environment Agency: March 1999, Interim internal technical guidance for best practice flaring of landfill gas
- Weber Dr., Burkhard: Gas prognosis, various sources
- Wilkins, Graham Thomas: M. Phil. Thesis 2000, The development of a strategy for Biffa Waste Services to reduce its atmospheric emissions of landfill methane

CV: Wolfgang H. Stachowitz

About the Author

Wolfgang H. Stachowitz started his professional career in 1987 in the function of Project Manager for landfill gas extraction facilities at Haase Energietechnik GmbH, Neumuenster, Germany. Sales and planning activities made him travel to numerous landfill sites throughout Europe. Until spring 2001, Wolfgang H. Stachowitz was responsible for the planning, implementation, and commissioning of a total of about 450 gas engineering plants in the world. He was an Authorized Signatory in these years and in charge of the entire Gas Engineering Department.

In 2002 he created his own company: DAS – IB GmbH, Kiel, Germany in the fields of Biogas, digester gas and LFG (landfill gas) - Technology. Planning, projecting, schooling for operation personal and independent expertises are the mean activities know in Europe.

Wolfgang H. Stachowitz, Dipl.-Ing.

DAS – IB GmbH

Flintbeker Str. 55

D 24113 Kiel

Phone #49 (431) 683814

Fax #49 (431) 2004137

Web / Internet: www.das-ib.de

Last Update: November 22nd 2007